

ST PETER'S POST



NATIVITIES



Our EYFS and Key Stage 1 Nativities were the highlight of this week! Our amazing children shone in their roles and we couldn't be more proud of the brilliant job they all did.

Thank you to everyone that came along to watch the performances, you made it extra special for your children



ST PETER'S POST



ELF DAY



We had our very own piece of Lapland on Thursday with everyone coming in dressed as Elves or in their Christmas PJ's. Santa knows where to come if he needs extra help this Christmas Eve! Look at the end of St Peter's post for all the outfits!



A LETTER TO SANTA



F1 have posted their letters to Santa! They even saw the North Pole's Postman emptying the post box so they made sure to make an extra wish

CRAFTS & CAROLS



Preschool, F1 & F2 had the first of our Crafts & Carols sessions to end this week. They loved getting creative with the parents & carers and had lots of fun making their own Christmas decorations.



ST PETER'S POST



CHRISTMAS PJ DAY

WEDNESDAY 10TH DECEMBER

We are asking for donations of

TOYS | SOFT DRINKS | TEDDIES

Come to school in your PJs, Oodies or onesies!
We are asking for donations to go towards our Christmas Market

ST PETER'S CHRISTMAS BAKE OFF

MONDAY 8TH DECEMBER

ROLL UP YOUR SLEEVES,
GET CREATIVE AND ADD A FESTIVE HOLIDAY CHEER TO YOUR BAKES!

BISCUITS & CAKES WILL BE JUDGED SO MAKE SURE TO BRING YOUR CREATIONS WITH YOU FOR A CHANCE TO WIN!



Yr4 have been using their creative skills to make Greek temples in their History lesson. They started their structures by building the frames out of construction straws and will be continuing by adding more details over the next couple of lessons

REMINDERS

Christmas Bake Off is on Monday 8th! Bring in your creations for a chance to win

Year 5 have their class assembly on Wednesday 10th December.

We break up for Christmas on Thursday 18th December at 1pm and re-open on Tuesday 6th January

Yr4, 5 & 6 visit Gulliver's World Friday 12th December. Payment of £12 must be paid via ParentPay or in cash.



ST PETER'S POST



ILLNESS & APPOINTMENTS

Don't forget, if your child is ill call 0151 677 8438 and leave a message before 9:30am.

If you need to collect your child early for an appointment the LA are now asking for medical proof. This can be a letter, text, email or appointment card.

ST PETER'S RC PRIMARY CURRICULUM CLUBS

Clubs start **Monday 3rd November** & run for **6 weeks** each (finishes 12th December)

Places must be booked in advance

Without booking your child will be unable to attend and will need to be collected.

Full payment must be made in advance via ParentPay. Outstanding balances on all items must also be paid beforehand.

Day	Club	Year	Price
Monday	Basketball/Bench ball	Yr5 & 6	£6 (£1 per week)
Tuesday	Christmas Crafts Club	Yr1 & 2	£6 (£1 per week)
	Karaoke Club	Yr3, 4, 5 & 6	£6 (£1 per week)
Wednesday	Basketball/Bench ball	Yr1 & 2	£6 (£1 per week)
	Christmas Carols	Yr3, 4, 5 & 6	£6 (£1 per week)
Thursday	Basketball/Bench ball	Yr3 & 4	£6 (£1 per week)
	Sign Language	Yr1 & 2	£6 (£1 per week)
Friday	Multi Skills	F2	£6 (£1 per week)

IN YEAR & EARLY YEARS APPLICATIONS

The Local Authority manages admissions for Foundation 2 to Year 6.

If you or someone you know would be interested in joining the St Peter's family go to: www.wirral.gov.uk/schools-and-learning/school-admissions

Places for Preschool (2yr olds) & F1 (3&4yr olds) are dealt with via the school office.

Come and get an application & ask for a walk around!

There are 190 days in a school year



UNIFORM



School Uniform

Blue polo shirt
Burgundy sweatshirt or V-neck jumper
Slate grey (dark trousers)
Tartan skirt/pinafore
Black shoes or completely black trainers

PE Kit

White t-shirt
Black sweatshirt with badge
Black shorts or black jogging bottoms
Black pumps or trainers for outdoor PE



ST PETER'S POST



PEER SUPPORT @ FAMILY HUBS

Support Group for Parents/Carers
of children with disabilities or
special educational needs

- A listening ear & non-judgemental support
- A safe space, no subject taboo
- Solution Focused
- Free refreshments

Peer support groups running term time across Wirral. No need to book, just come along!

Koala NW Family Hub Woodchurch Ln, Birkenhead, CH42 9PH	1 st Monday of the month STAY & PLAY - BOOK ONLINE	10am - 11.30am
Ganneys Meadow Family Hub New Hey Rd, CH49 8HB	1 st Friday of the month	9am - 10.30am
Eastway Primary School Family Hub Rossall Road, CH46 8TA	1 st Friday of the month	12.30pm - 2pm
Grove Street Primary School Family Hub New Ferry, CH62 5BA	2 nd Tuesday of the month	10am - 11.30am
St James Centre Family Hub 344 Laird Street, CH41 7AL	2 nd Tuesday of the month	12.30pm - 2pm
St James Centre Family Hub 344 Laird Street, CH41 7AL	2 nd Wednesday of the month	9.30am - 11.30am
Ganneys Meadow Family Hub New Hey Rd, CH49 8HB	2 nd Friday of the month	9am - 10.30am
Pensby Primary Family Hub Greenbank Drive, CH61 5UE	3 rd Tuesday of the month	10am - 11.30am
Seacombe Family Hub St Paul's Road, Wallasey, CH44 7AN	3 rd Tuesday of the month	12.30pm - 2pm
Bromborough Family Hub Gratrix Road, CH62 7BW	3 rd Wednesday of the month	10am - 11.30am
Online, Evening Peer Support Group	3 rd Thursday of the month BOOK ONLINE	7.30pm - 8.30pm
Equilibrium Family Hub Livingstone Street, CH41 3HX	Last Wednesday of the month	3.30pm - 5pm

To find out more please email: admin@thepositivitree.com or call 0151 458 8033

HAVE YOUR SAY... JOIN WIRRAL'S PARENT CARER PANEL!

Are you a parent or carer of a child or young person aged 0-19 (or up to 25 with SEND)? We want to hear from you!

We're inviting parents and carers from all walks of life to join our Family Hub Parent Carer Panel and help shape the services that support families across Wirral.

Why get involved?

- Influence how services are designed and delivered
- Share your experience to help shape support that works for local families
- Help identify what's working, what's missing, and what could be better
- Meet other parents and carers like you

What you'll get

- A chance to connect with other families
- A say in projects and plans for Family Hubs
- Refreshments at every session
- A Family Hubs lanyard and membership ID

Ready to join in?

Scan the QR code or email us at familyhubs@wirral.gov.uk



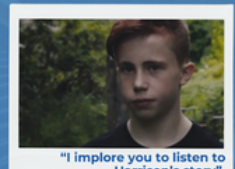
THE RAIL SAFE FRIENDLY PROGRAMME

Discover our FREE rail safety videos and keep your children safe by visiting railsafefriendly.com

The Rail Safe Friendly programme has educated over **3 million young people** on the dangers of the railways.



DON'T LET YOUR CHILDREN BECOME THE NEXT STATISTIC



"I implore you to listen to Harrison's story"
Simon Frazer, Principal,
Gillsborough Academy

According to the **ORR Report** April 23 - March 24 on UK railways:

12

people died in accidents while trespassing

58%

were struck by a train or tram

42%

were electrocuted

According to **Rail Safe Friendly**, July 25:

120+

companies support the programme

11,000+

schools in the UK have engaged

20,000+

UK schools still need to be reached



EMPOWERING
PARENTS
EMPOWERING
COMMUNITIES



Free Parenting Course: EPEC Being a Parent

For parents and carers of children aged 2-11 in Wirral.

Are you looking for ways to:

- Feel more confident as a parent?
- Manage family stress more effectively?
- Build stronger relationships with your child?

Scan to



Sign up today!



Apps & their age ratings

13+



Facebook



Snapchat



Instagram



X (Twitter)



TikTok



Kik



YouNow



Yubo



House Party



Monkey

16+



WhatsApp

17+



Sarahah



YOLO

18+



MeetMe



LiveMe

ST PETER'S POST



Monday 8 th December	Christmas Bake off - bring in your festive bakes
Tuesday 9 th December	Crafts & Carols - Yr4, 5 & 6 - 10am (parents invited)
Wednesday 10 th December	Yr5 class assembly - parents invited Christmas PJ day
Thursday 11 th December	National Christmas Jumper Day Christmas Dinner - £3.10 via ParentPay Choir Visit to Nursing Home Disco - Preschool, F1 & F2 - 2:30pm to 3:15pm (£1 each) Yr1, Yr2 & Yr3 - 4pm to 5pm (£1 each) Yr4, Yr5 & Yr6 - 5:15pm to 6:15pm (£1 each) Tuck shop available at all discos
Friday 12 th December	Crafts & Carols - Yr1, 2 & 3 - 10am (parents invited) Gulliver's World Trip - Yr4, 5 & 6
Monday 15 th December	Christmas Mad Hair Day
Tuesday 16 th December	Christmas Market (Children only) - pm
Wednesday 17 th December	Christmas Part Day - donations of party snack appreciated
Thursday 18 th December	Christmas Grotto - am (no parents) School Closes - 1pm (no Shine Club)
Tuesday 6 th January	School re-opens



WEEK 2

MEAT FREE MONDAY

TUESDAY

WEDNESDAY

SUGAR FREE THURSDAY

MEAT FREE FRIDAY**AVAILABLE DAILY**

VEGETARIAN OPTION OF CHOICE 1

JACKET POTATO
WITH A SELECTION
OF FILLINGS SERVED
WITH A SIDE SALAD

**FRESHLY MADE
SALAD**

FRESH BREAD

FRUIT YOGHURT

FRESH FRUIT

CHILLED WATER



2 Slices of Thin & Crispy Cheese
& Tomato Pizza (V), served with
Baked Beans, Seasonal Vegetables
or Coleslaw



**Deli Choice of Breads
with a Selection of Fillings
served with a Side Salad**



Sticky Flapjack



Sausage Pattie Brunch served with



**Deli Choice of Breads
with a Selection of Fillings
served with a Side Salad**



Fruit Jelly



Pasta Bolognese served
with Crusty Bread &
Seasonal Vegetables



**Deli Choice of Breads
with a Selection of Fillings
served with a Side Salad**



Fresh Fruit Salad



CHRISTMAS
DINNER



Cod/Salmon Fish Fingers
served with Chips,
Baked Beans or Peas



**Deli Choice of Breads
with a Selection of Fillings
served with a Side Salad**







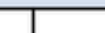




Snicker Doodle Biscuit

For allergen information, please ask one of our catering team • All the above dishes are subject to availability



THIS WEEKS ATTENDANCE

Class Attendance – Week Ending 05.12.25

								
Preschool Mrs Smith	F1 Mrs Jones	F2 Miss Grossie	Yr1 Mrs Coates	Yr2 Miss Harrison	Yr3 Mr MacKenzie	Yr4 Miss Redfearn	Yr5 Miss Noorani	Yr6 Mrs Camden
94.1%	100%	96.9%	90.2%	98.1%	95%	97.4%	91%	99.3%
Whole School Weekly Attendance - 95.8%								